

FORTRESS SECURITY

Regal Series

VALUE LEADER

- 1/8" UNIBODY**
- 3/8" REINFORCED DOOR**
- 75 MINUTE FIRE PROTECTION**
- 1 1/4" DIA. PRY BOLTS**
- UP TO 1 3/4" FIREWALL**



WITH PATENTED **Pry Bolts**
A HERITAGE SAFE EXCLUSIVE



Model FSR 3660

SHOWN WITH

- ◀ Granite textured exterior
- ◀ Beige interior

HIGH QUALITY AT LOW COST

Our Fortress Security Regal series safes offer a great value. The security and fire protection are equal or superior to industry standard, while the graphics and finish are more elegant than you will find in other budget safes—or even in other manufacturers' premium lines.

STANDARD FEATURES

- ◀ UL listed and certified for security
- ◀ Class III 75-minute ITR fire certification
- ◀ 1/8" steel body and solid reinforced door frame
- ◀ 3/8" reinforced door with 3 1/2" angle frame
- ◀ 3 3/8" overall door thickness
- ◀ 1 3/4" firewall (up to 3 layers)
- ◀ 1 1/4" diameter pry-bolt locking bolts on all four sides
- ◀ Sargent & Greenleaf UL-listed group II combination lock
- ◀ Chrome-plated 3-point handle
- ◀ Positive deadlock locking mechanism
- ◀ Diam-a-Shield™ triple hardplate protecting critical spots
- ◀ Quad Sleeve™ relocker and overcam design
- ◀ Detent system
- ◀ Plush suede velour interior (including sidewalls)
- ◀ Lifetime warranty

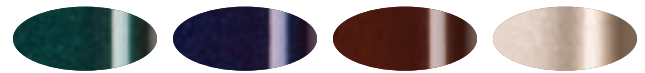
EXTERIOR COLORS

Choose from these standard colors in stunning, high-gloss urethane finish or rugged, durable textured finish:

Gloss Exterior Colors



Gloss Black Black Cherry Ivory White



Hunter Green Metallic Midnight Blue Metallic Dark Burgundy Metallic Titanium Metallic

Textured Exterior Colors

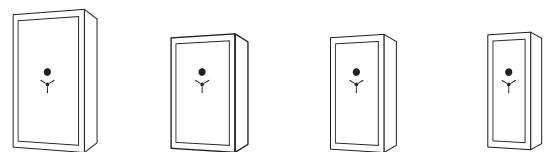


Granite Emeraldstone Cherrystone Sandstone

INTERIOR COLORS



Beige Cocoa



Model ▶

	FSR 4072	FSR 3660	FSR 3060	FSR 2460
WIDTH	40"	36"	30"	24"
HEIGHT	72"	60"	60"	60"
DEPTH	28"	28"	25"	21"
OVERALL DEPTH*	31 1/2"	31 1/2"	28 1/2"	24 1/2"
WEIGHT	1050 lbs.	800 lbs.	720 lbs.	470 lbs.
LOCKING PRY-BOLTS†	18	12	12	7
MAXIMUM GUN CAPACITY	52	44	27	21

*Custom order
your Heritage Safe.
Contact Heritage Safe Co.
at www.heritagesafe.com*

* Overall depth includes lock and handle. Without handle, safe will fit through a 30" door.

† Number of locking bolts includes 4 on each side and, in the FSR 4072 and FSR 3660 models, 1 top and 1 bottom.